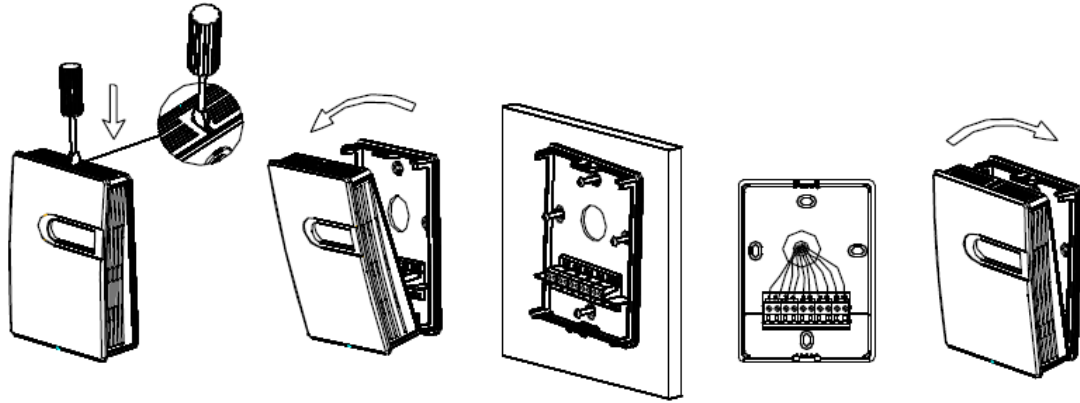


Installation – Wall mounting



Installation steps

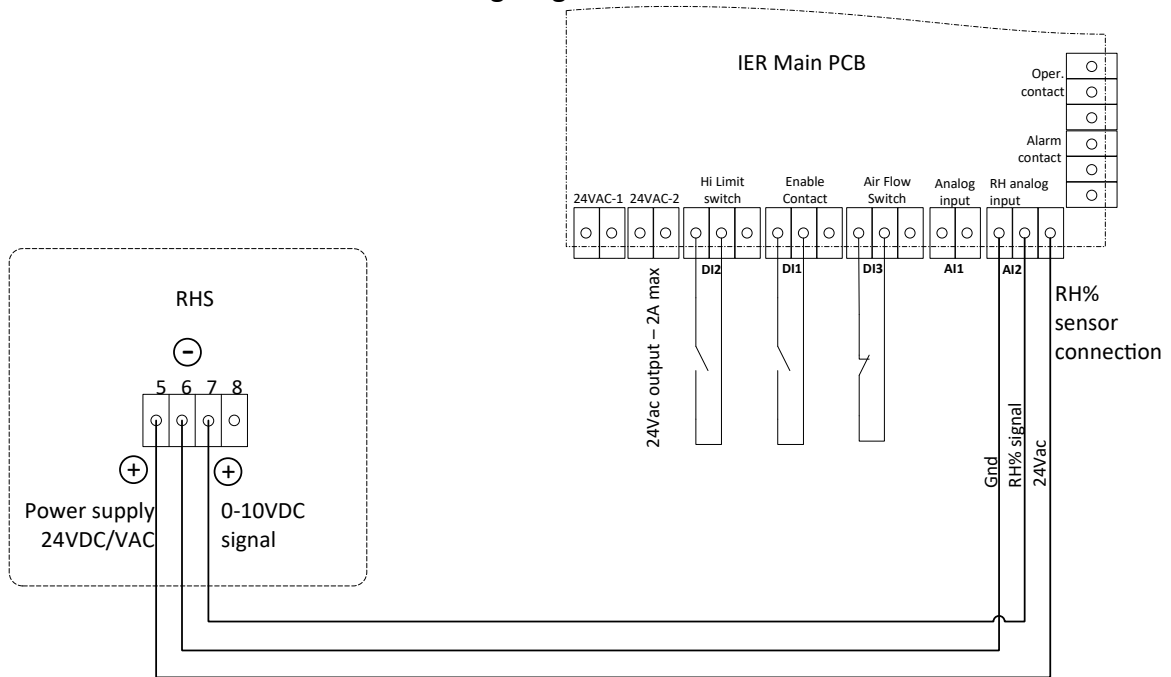
Installation steps

1. Carefully plan the location of the RHS. This one should not be located next to the source of humidification.
2. RHS is a wall mount control that can be installed on a electrical box or directly to the wall.
3. Insert a small screw driver onto the snap-in tab located on the top of the RHS, push down the tab and pull the front cover.
4. Install the base of the RHS on the wall or electrical box by using the 2 supplied screws.
5. Proceed to the electrical wiring as per wiring diagram.
6. Re-install the front cover.

Electrical connection

CAUTION: disconnect power supply before to proceed to electrical connection

It is recommended to power the RHS with a dedicated transformer or power supply source. Connect RHS as described in below wiring diagram.



Wiring diagram