

Electric resistive steam humidifier

IER

- Produces pure and sterile steam.
- Capacities from 4.5 à 84kg/h.
- Constant and precise steam production $\pm 1\%RH$.
- Suitable for tap or RO water without additional option.
- Permanent stainless steel cylinder.
- Thermally insulated cylinder for better efficiency.
- Board computer with real time clock and touch screen 17.8cm (7").
- Wi-Fi remote connexion.
- Most compact humidifier of the industry.
- Polymeric access door.
- Guide & lock approach system (patent pending).
- Long life heating elements with extra low watt density.
- TUV certified to UL998 and CE approved.
- 3 years warranty*.



STEAMOVAP
humidity provider

Electric resistive steam humidifier IER

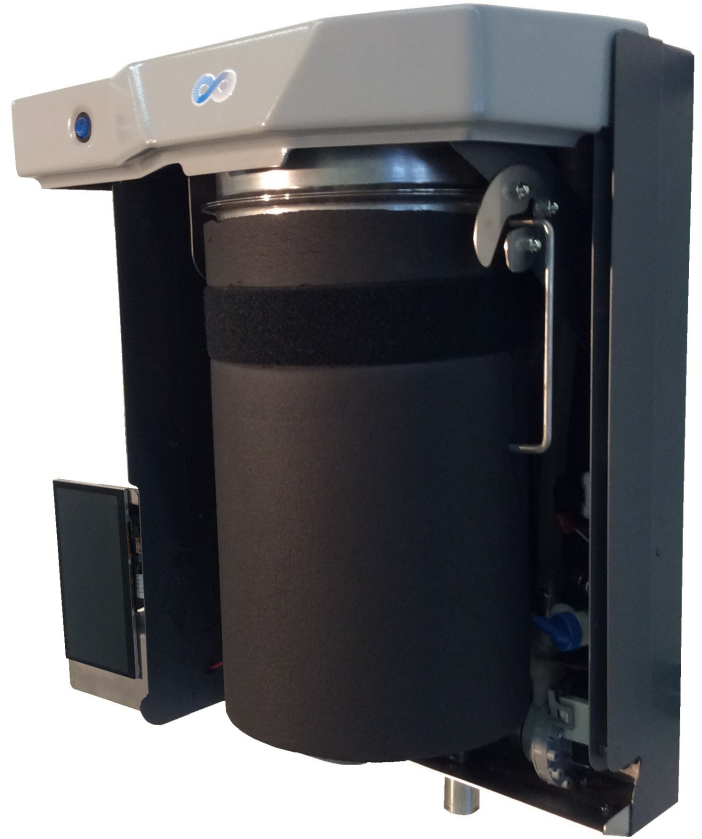
IER humidifier by steamOvap is an electric steam generator that uses water immersed resistive heating elements to produce pure and sterile steam that is easy to distribute in air handling unit or ventilation duct, or directly into space by using our steam distribution box, SB model.

IER humidifier can be supplied with tap or treated water such as softened or reverse osmosis water.

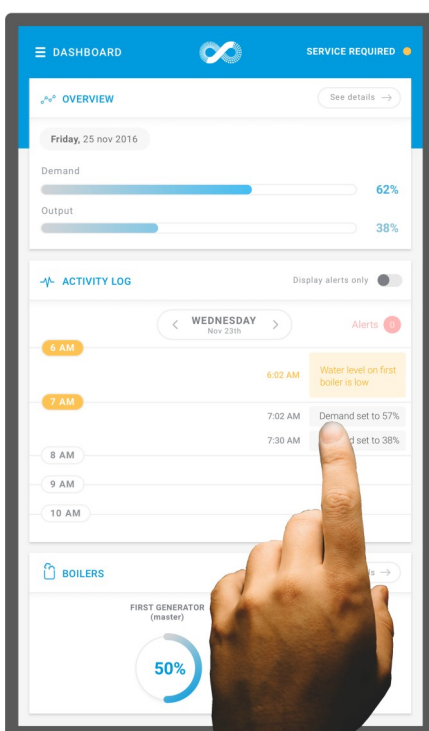
When tap water is used, the scale will come off the heating elements by the natural contraction and expansion of the heating elements. Scale pieces then accumulate at the bottom of the cylinder without the risk of clogging the drain outlet.


Regular maintenance and cylinder cleaning is very easy thanks to our unique "guide & lock" system. It is a safe and proven solution that requires no tool to remove the cylinder and no consumable to replace regularly.

Its evaporation cylinder made of stainless steel grade 304 is covered with thermal insulation in order to reduce energy losses.



Board computer and 7" touch screen



- ⊕ Clear and easy to understand message and screens.
- ⊕ Incomparable user experience.
- ⊕ Dashboard screen with activity log indicating all operation events in real time.
- ⊕ Log of operation and alarms easily exportable.
- ⊕ Help pop-up window available at all time by clicking on .
- ⊕ Simple and error free configuration with intelligent menus.
- ⊕ Wi-Fi access point for remote connexion with smartphone, tablet or laptop computer.
- ⊕ Modbus RTU-IP communication protocol to BMS as standard.
- ⊕ Other communication protocols such as BACnet IP available.

A robust construction



- ⊕ Designed and built only with proven and tested materials for durability.
- ⊕ No plastic parts in contact with boiling water.
- ⊕ Unique electronic system self-adapting mineral deconcentration cycles in function of water conditions.
- ⊕ Accepts without alteration pure water (RO) or softened water or even untreated tap water.

- ⊕ Nickel alloy (incoloy 800)

immersion heaters with very low watt density.

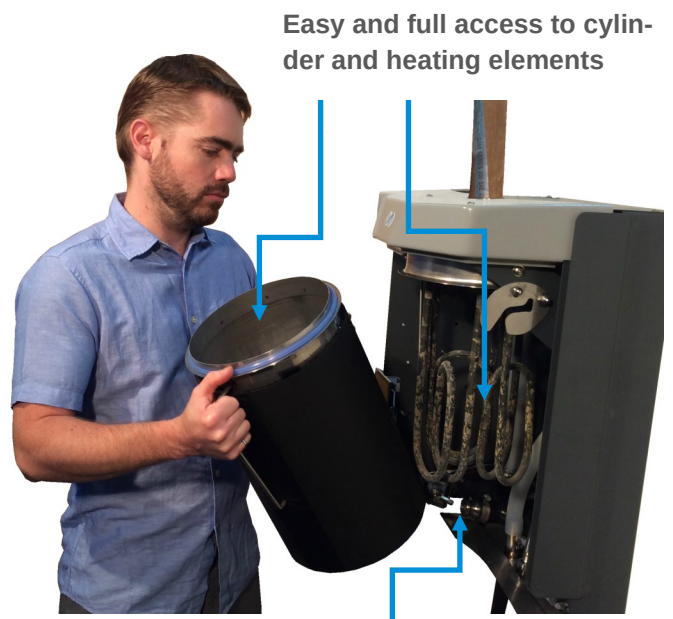
- ⊕ Integrated water drained cooling without the addition of expensive external drain cooler.
- ⊕ Internal hydraulic circuit without check valve prone to block in open or closed position.
- ⊕ IER is the most compact and lightweight humidifier in its class.



Effortless and simple maintenance



Guide & Lock system
(patent pending)



Easy and full access to cylinder
and heating elements

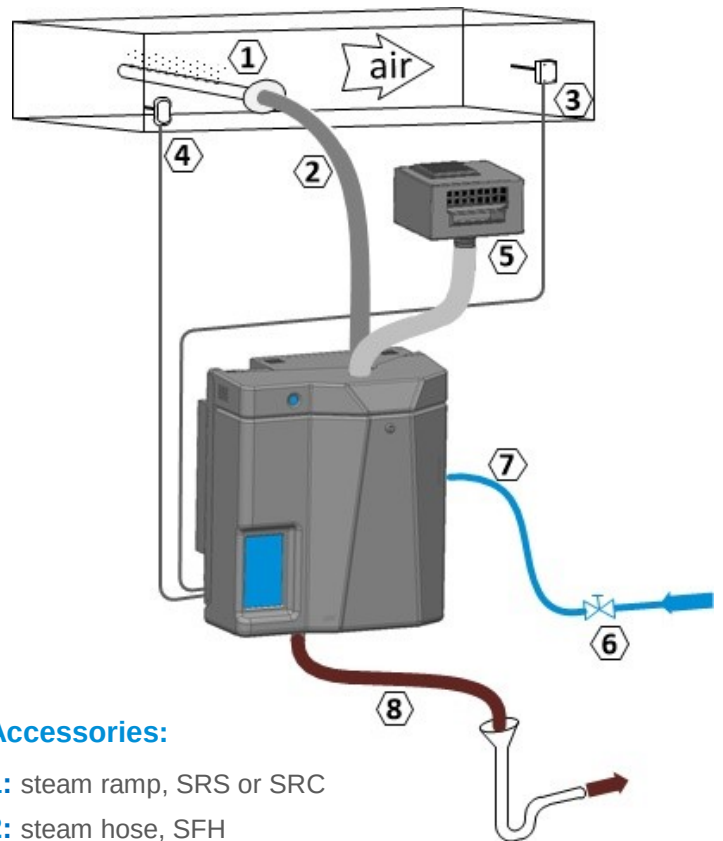
Stainless steel quick connect

- ⊕ Removal and re-assembly of the cylinder in minutes.
- ⊕ No tools required.
- ⊕ No electrical connexion to remove.
- ⊕ Humidifier maintenance has never been as simple and easy.

Technical data

Model	IER04	IER05	IER09	IER12	IER17	IER22	IER31	IER44	IER62
Capacity (kg/h)	4.5	6.8	11.3	15.9	22.7	29.5	42.1	59.1	84.1
Power (kW)	3.3	5.0	8.3	11.7	16.7	21.7	30.9	43.3	61.7
Voltage (Vac) /Nb of Phase	230/1 400/3	230/1 400/3	230/1 400/3	400/3	400/3	400/3	400/3	400/3	400/3
Cylinder type & qty	1 small			1 medium			2 mediums		

Features	Std	Opt
Stainless steel cylinder with thermal insulation	X	
Internal PID control	X	
Solid state relay (SSR) control for precise steam production	X	
Board computer with real time clock	X	
7in touch screen panel	X	
Modbus RTU-IP communication	X	
Water supply with tap , soft or RO water	X	
Integrated water drained cooling off	X	
Wall mount with keyholes	X	
3 years* manufacturer warranty	X	
Wi-Fi access point for remote connexion		X
Bracket kit for easy wall mounting		X
Floor mounting rack		X
BACnet MS/TP or IP communication		X
Operation and alarm contacts		X



Accessories:

- 1: steam ramp, SRS or SRC
- 2: steam hose, SFH
- 3: high limit RH% switch, DHL
- 4: air proving switch, DAP
- 5: steam blower pack for space, SB
- 6: water shut-off valve
- 7: water supply braided hose (supplied)
- 8: drain water pipe



Contact us:

web: www.steamOvap.com
address: 33 rue Prince, Montréal, Québec, H3C 2M7, Canada
tel: +1 844 357 4477
email: info@steamOvap.com

Condition: (*) start-up report without default done by authorized steamOvap local representative.