

Electric resistive steam humidifier IER

- Produces pure and sterile steam.
- Capacities from 2.8 to 84kg/h.
- Constant and precise steam production $\pm 1\%RH$.
- Permanent stainless steel cylinder.
- Suitable for tap or RO water without additional option.
- Thermally insulated cylinder for better efficiency.
- Unique EcoEnerSmart® function saving energy and water.
- Board computer and 7" touch screen .
- Real time scheduler
- Wi-Fi remote connexion.
- BACnet MS-TP or Modbus RS485
- Most compact humidifier of the industry.
- Modbus RTU
- Polymeric access door.
- Guide & lock approach system (patent pending).
- Very robust heating elements with extra low watt density.
- TUV certified to UL998 & CE.
- 3 years warranty*.



Electric resistive steam humidifier IER

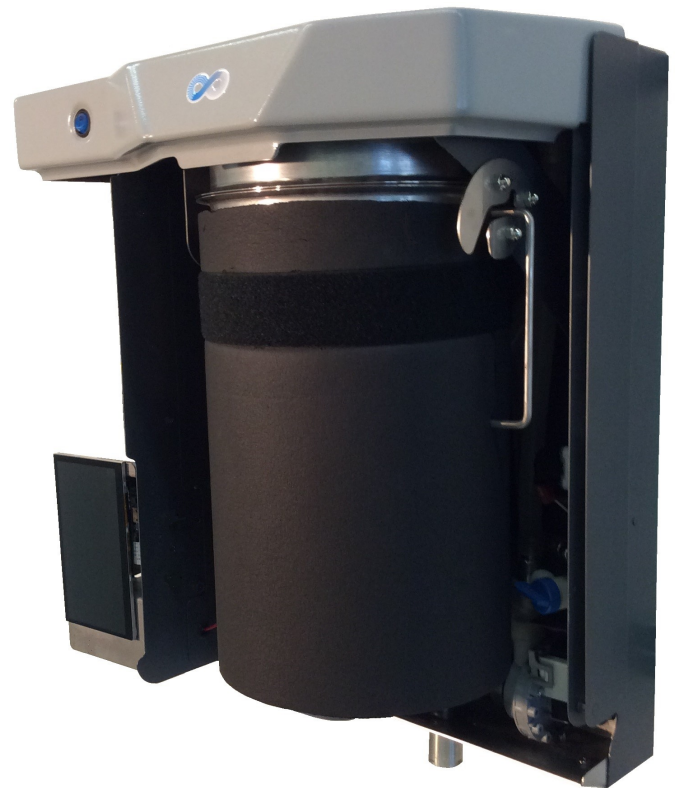
IER humidifier by steamOvap is an electric steam generator that uses water immersed resistive heating elements to produce pure and sterile steam that is easy to distribute in air handling unit or ventilation duct, or directly into space by using our space blower, SB model.

IER humidifier can be supplied with tap or treated water such as softened or reverse osmosis water.

When tap water is used, the scale will come off the heating elements by the natural contraction and expansion of the tube heaters. Scale flakes accumulate at the bottom of the cylinder without the risk of clogging the drain outlet.

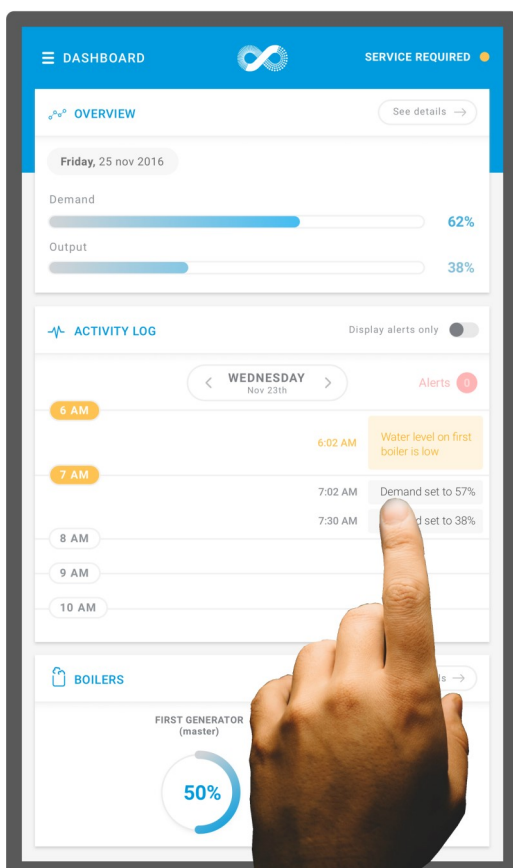
Regular maintenance and cylinder cleaning is very easy thanks to our unique “guide & lock” system. It is a safe and proven solution that requires no tool to remove the cylinder and no consumable to replace regularly.

Its evaporation cylinder made of stainless steel grade 304 is covered with thermal insulation in order to reduce energy losses.



Board computer and 7” touch screen

- ⊕ Clear and easy to understand message and screens.
- ⊕ Incomparable user experience.
- ⊕ Dashboard screen with activity log indicating all operation events in real time.
- ⊕ Log of operation and alarms easily exportable.
- ⊕ Real time scheduler allows you to program as many events as you like such as change of set-point, or others.
- ⊕ Simple and error free configuration with intelligent menus.
- ⊕ Wi-Fi access point for remote connexion with smartphone, tablet or laptop computer.
- ⊕ Modbus RTU-IP communication protocol to BMS as standard.
- ⊕ BACnet MS-TP and Modbus RS485 communication are optional.



A robust construction



- ⊕ Designed and built only with proven and tested materials for durability.
- ⊕ No plastic parts in contact with boiling water.
- ⊕ Unique EcoEnerSmart® function with mineral de-concentration cycles self-adapting to water conditions (patent pending).
- ⊕ Accepts without alteration pure water (RO) or softened water or even untreated tap water.
- ⊕ Nickel alloy (incoloy 800) immersion heaters with very low watt density.

- ⊕ Integrated water drained cooling without the addition of expensive external drain cooler.
- ⊕ Internal hydraulic circuit without check valve prone to block in open or closed position.
- ⊕ IER is the most compact and lightweight humidifier in its class.



Effortless and simple maintenance



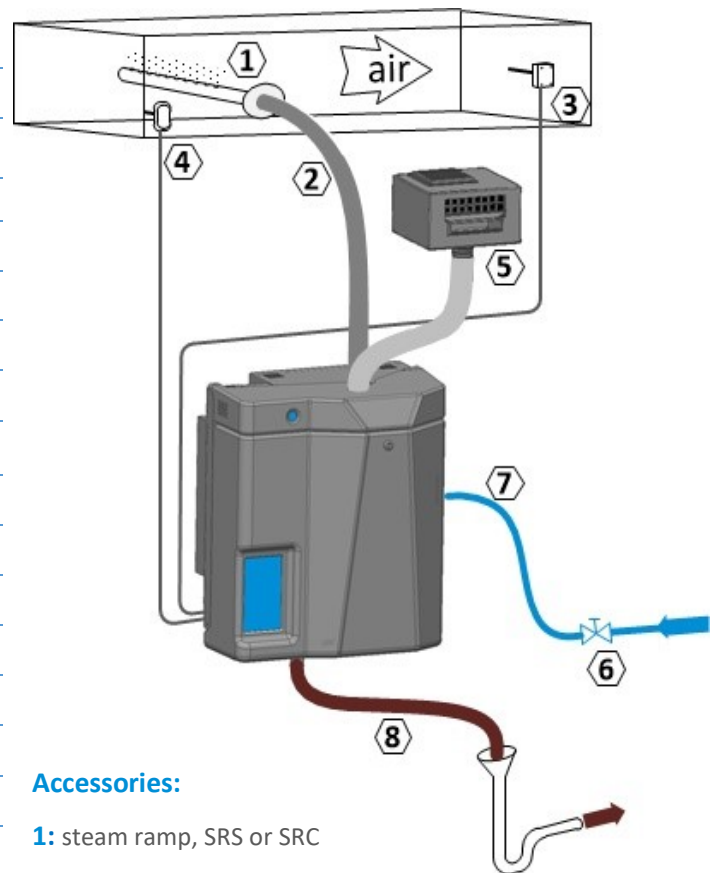
- ⊕ Removal and re-assembly of the cylinder in minutes.
- ⊕ No tools required.
- ⊕ No electrical connexion to remove.
- ⊕ 0 spare part required - not even a gasket !
- ⊕ Humidifier maintenance has never been as simple and easy.

Stainless steel quick connect

Technical data

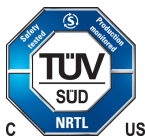
Model	IER04	IER05	IER09	IER12	IER17	IER22	IER31	IER44	IER62
Capacity (kg/h)	4.5	6.8	11.4	15.9	22.7	29.5	42.1	59.1	84.1
Power (kW)	3.3	5.0	8.3	11.7	16.7	21.7	30.9	43.3	61.7
Voltage (Vac) /Phase	230/1 400/3	230/1 400/3	230/1 400/3	230/1 400/3	400/3	400/3	400/3	400/3	400/3
Cylinder	1 small			1 medium			2 mediums		

Features	Std	Opt
Stainless steel cylinder with thermal insulation	X	
Internal PID control	X	
1 to 100% fully modulating steam prod. w/SCR	X	
Board computer & 7in touch screen	X	
Real time scheduler	X	
Modbus RTU-IP communication	X	
Wi-Fi access point for remote connexion	X	
Water supply with tap , soft or RO water	X	
Integrated water drained cooling off	X	
Operation and alarm contacts	X	
Proportional feed-back signal	X	
Wall mount with keyholes	X	
3 years* manufacturer warranty	X	
Built-in or remote mounting Space blower		X
Bracket kit for easy wall mounting		X
Floor mounting rack		X
Roof top - weather proof - enclosure (IP65)		X
BACnet or Modbus RS485 communication		X



Accessories:

- 1: steam ramp, SRS or SRC
- 2: steam hose, SFH
- 3: high limit RH% switch, DHL
- 4: air proving switch, DAP
- 5: steam blower pack for space, SB
- 6: water shut-off valve
- 7: water supply braided hose (supplied)
- 8: drain water pipe



Contact us:

web: www.steamOvap.com

address: 9495 Charles de la Tour, Montreal, Qc, Canada

tel: +1 844 357 4477

email: info@steamOvap.com